



**EUREC**

WE KNOW HOW.



# EuRec Round Baling System RBS-2

Packaging System for Waste and Recyclable Material

# TECHNICAL DATA

**Fields of use:** For packaging of all kinds of compressible waste and recyclables, particularly suitable for domestic and residual waste, recyclables, substitute fuels, saw dust, various other types of waste

**Input material:** Maximum 400 mm (to a certain degree, overlength parts possible) to guarantee a trouble-free operation and to achieve high throughput and good material compaction

**Feeding:** By continuous and adjustable material flow, observance of RBS-2 START and STOP signals

**Operating:** Process runs automatically, use of only one plant operator for process monitoring and film change inside the operating room

**Bale discharge:** Possible to both sides

**Bale weight:** Approx. 800 - 1200 kg for substitute fuel, up to approx. 1400 kg for shredded bulky refuse, up to approx. 2300 kg for shredded domestic waste with organic components, depending on composition and specific density of waste and recyclables

**Bale dimensions:** Cylindrical, 1.5 m diameter, 2.83 m<sup>3</sup> volume (for 1.6 m height), height adjustable from 1.20 to 1.60 m

**RBS-2 dimensions:** 40" container, approx. 12.2 m (length) x 2.5 m (width) x 2.9 m (height) with container locks

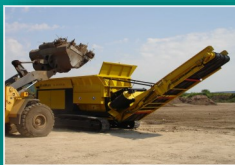
**Energy consumption:** Connected value: rotary current 400 V, 50 Hz, average consumption: approx. 60 % of the 100 kW connected load

**RBS-2 weight:** Approx. 23 tons, approx. 27.5 tons with hydraulic lifting system

**Used film:** Material: LLDPE      Width: 500 mm      Thickness: 0.025 mm

## Most important Features:

- Either for stationary use or for mobile use with 4 extendible hydraulic supports for easy loading on/unloading from a low-bed truck without using a crane
- Low consumption and operating costs, low wear
- No use of nets, wire and metal strips
- Low film consumption per weight unit because of high density and large volume (2.83 m<sup>3</sup> per bale with 1.60 m height)
- High compaction of waste inside the press vessel, caused by high pressure from beginning of filling, created by two hydraulically driven compaction rollers
- Heavy-weighted bales reduce transport frequencies and save personnel costs
- Even in the open air medium to long-term storage suitability of waste and recyclables in dependence on type of used film
- Prevention of gas and leakage water emissions
- Preservation of physical characteristics of waste and recyclables for further utilization
- Prevention of spontaneous ignition of packed material



Shredding



Packaging



Bale discharge



Transport



Bale storage

Contact us today, our team of experts give advice and assistance.

Subject to modifications.



**EUREC**

EuRec Environmental  
Technology GmbH  
Borntalstraße 9  
36460 Merkers / GERMANY  
Phone +49(0)36969/58-132



[www.eurec.de](http://www.eurec.de)

Find EuRec here:

